



2 King Brude Terrace , Inverness, IV3 8PT

A two-bedroom, ground floor flat, located within walking distance of Inverness city centre. The flat has gas central heating, double glazing and boasts off-street parking.

Offers Over £130,000

2 King Brude Terrace

, Inverness, IV3 8PT



PROPERTY

ENTRANCE VESTIBULE

Approx 3'2" x 3'10" (Approx 0.96 x 1.18)

LOUNGE

Approx 15'9" x 11'0" (Approx 4.79 x 3.35)

KITCHEN

Approx 8'3" x 10'1" (Approx 2.51 x 3.07)

INNER HALL

BATHROOM

Approx 6'6" x 6'3" (Approx 1.99 x 1.91)

BEDROOM TWO

Approx 8'4" x 9'10" (Approx 2.54 x 3.00)

BEDROOM ONE

Approx 11'10" x 8'4" (Approx 3.60 x 2.53)

SERVICES

EXTRAS

HEATING

GLAZING

COUNCIL TAX BAND

VIEWING

ENTRY

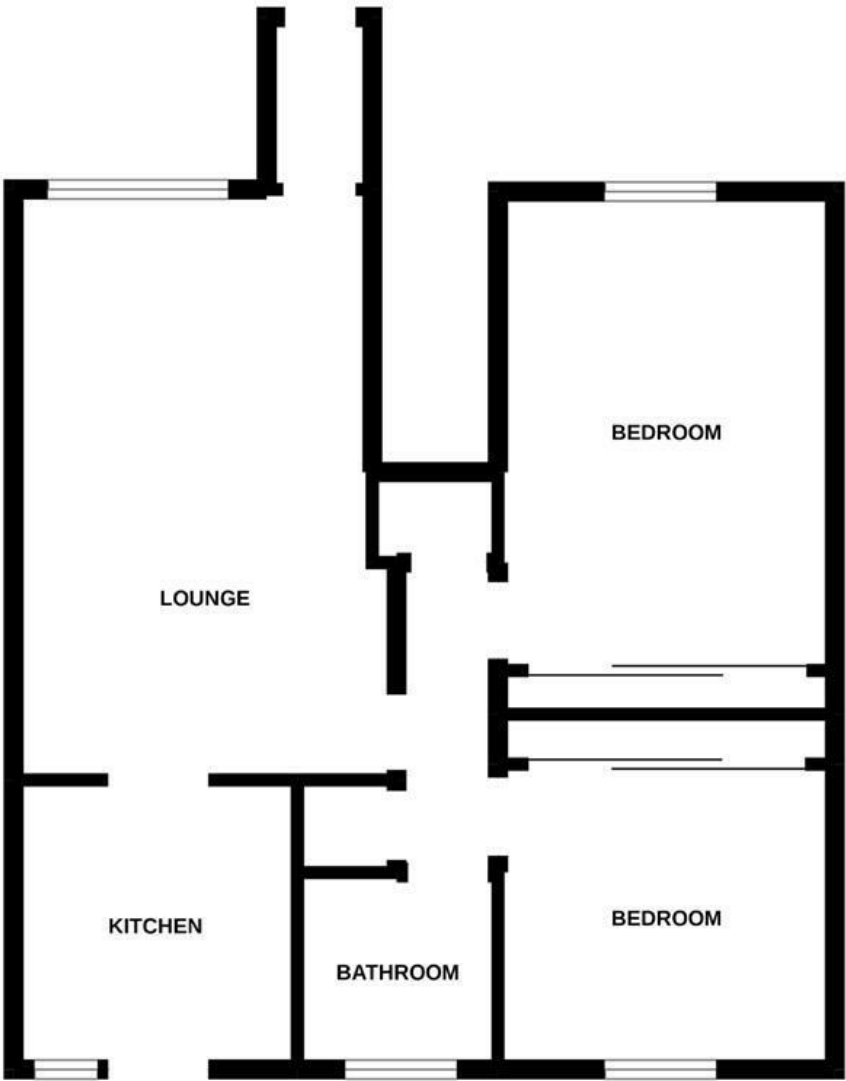
HOME REPORT

Directions





Floor Plan



Whilst every attempt has been made to ensure the accuracy of the floorplan contained here, measurements of doors, windows, rooms and any other items are approximate and no responsibility is taken for any error, omission or mis-statement. This plan is for illustrative purposes only and should be used as such by any prospective purchaser. The services, systems and appliances shown have not been tested and no guarantee as to their operability or efficiency can be given.
Made with Metropix ©2022

These particulars, whilst believed to be accurate are set out as a general outline only for guidance and do not constitute any part of an offer or contract. Intending purchasers should not rely on them as statements of representation of fact, but must satisfy themselves by inspection or otherwise as to their accuracy. No person in this firms employment has the authority to make or give any representation or warranty in respect of the property.

47 Church Street, Inverness, IV11DR
Tel: 01463225533 Email: property@munronoble.com www.munronoble.com

Energy Efficiency Rating		
	Current	Potential
Very energy efficient - lower running costs		
(92 plus) A		
(81-91) B		
(69-80) C		
(55-68) D		
(39-54) E		
(21-38) F		
(1-20) G		
Not energy efficient - higher running costs		
Scotland	EU Directive 2002/91/EC	